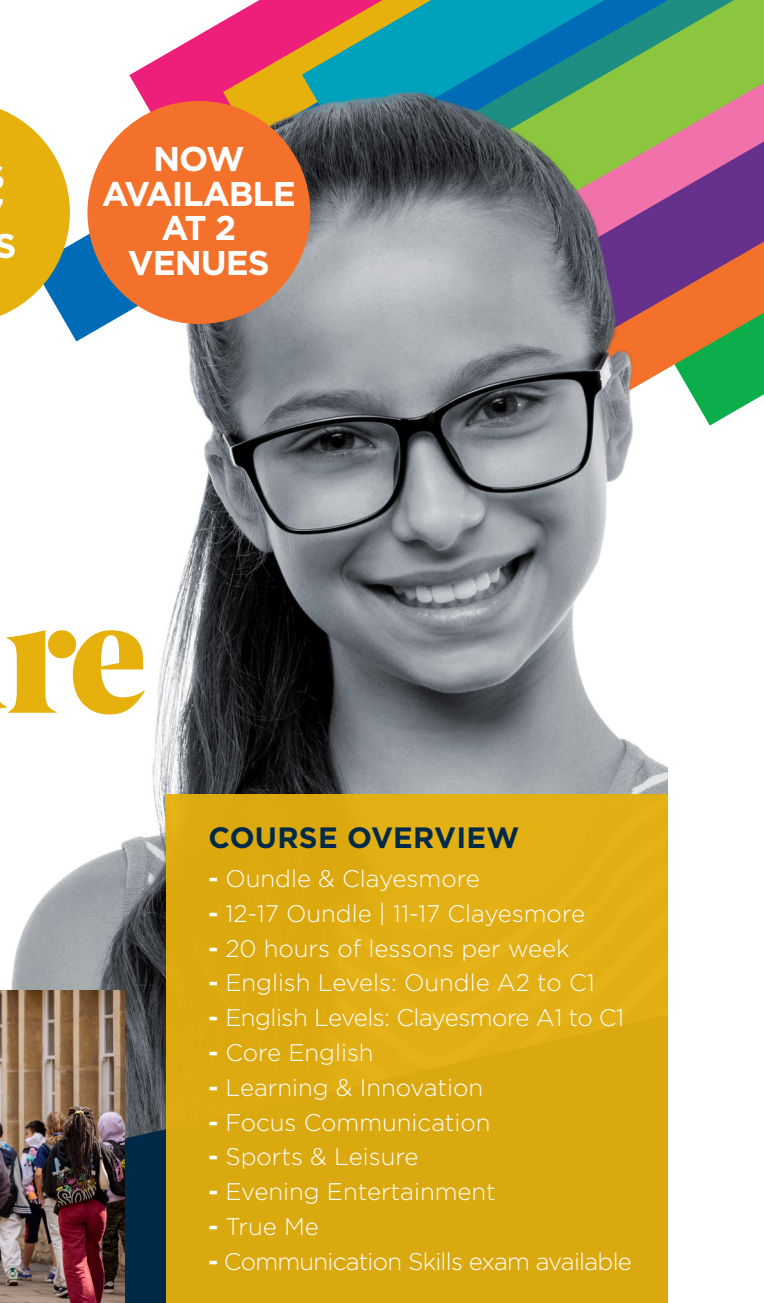




AGES
11 - 17
YEARS

NOW
AVAILABLE
AT 2
VENUES



Citizens of the future

This course is available to students aged between 11 and 17 and focuses on developing students' spoken and written communication skills to help them communicate more freely, naturally and confidently.



COURSE OVERVIEW

- Oundle & Clayesmore
- 12-17 Oundle | 11-17 Clayesmore
- 20 hours of lessons per week
- English Levels: Oundle A2 to C1
- English Levels: Clayesmore A1 to C1
- Core English
- Learning & Innovation
- Focus Communication
- Sports & Leisure
- Evening Entertainment
- True Me
- Communication Skills exam available

COURSE FORMAT

This course runs in conjunction with other British Summer School courses on the same campus. Students from all programmes share the same Core English and Learning & Innovation lessons, BSS Experience and all recreational activities and cultural excursions.

LOCATION

Student can choose to take the course at 1 of 2 locations. Students can choose between Clayesmore School, a senior boarding school located in the picturesque village of Iwerne Minster in the Southwest of England, or Oundle School, a prestigious senior boarding school situated in the charming market town of Oundle in the heart of Northamptonshire in central England.

ENGLISH LEVELS

The course welcomes students of all English levels from A1 to C1 (Clayesmore) and from A2 to C1 (Oundle).

LESSONS

There are 20 hours per week with 3 types of lessons: Core English, Learning & Innovation and Focus Communication. The objectives of the lessons are to improve students' receptive and productive language skills and to develop their ability to communicate and operate in the 21st century.

MISSION: INTEGRATION!

This takes place on Sunday evenings and consists of icebreaker and get-to-know-you activities to help new students integrate into school life and meet continuing students.

HOUSEWARMING!

On Monday evenings, students take part in a series of house-based games and activities to help them build new and consolidate existing friendships with other students from the same house.

SPORTS & LEISURE

Students take part in our Leisure programme where they can choose between a selection of different sports and leisure activities.

PRO OPTIONS (OUNDLÉ ONLY)

The Pro Options programme is optional and allows students to specialise in one sport or other recreational activity for the whole week and is designed to increase their skills, techniques, and knowledge in their chosen option.

BSS EXPERIENCE FEATURING TRUE ME

This is our evening entertainment programme that consists of a series of fun challenges and events designed to develop students personal and social skills, self-confidence, and authenticity.

CULTURAL PROGRAMME

Saturday and Sunday excursions allow students to visit places of cultural or historical interest or take part in a recreational activity with their friends.

Lessons



CORE ENGLISH

English language lessons are designed to improve students' receptive and productive skills (reading, writing, speaking, listening), extend the scope and range of their vocabulary in both formal and informal contexts and deepen their understanding of grammar to improve spoken and written accuracy.



LEARNING & INNOVATION

These task-based lessons enable students to work collaboratively to research, discuss and create projects that reflect their knowledge, skills, and personality while developing strategies that are essential for success in the 21st century. The projects have been specially created to help develop the students' capabilities in each of the 4Cs that form the core of the 21st Century Learning curriculum: Collaboration, Communication, Creativity, and Critical Thinking.



FOCUS COMMUNICATION

Effective communication is key to success in the 21st century and developing core communication skills is an integral and crucial part of this course.

These lessons are designed to help students develop the skills required to communicate more freely, naturally, and confidently in English in academic, recreational, and professional contexts.

Lessons include a range of oral and written communication methods such as:

- Academic essay writing
- Business report writing
- Creative writing
- Debating
- Negotiating
- Networking
- Presenting



EXAM COURSES

Students can choose to prepare and take the Trinity College Communication Skills exam.

This exam is designed around a series of real-world, practical tasks including CV preparation and job interviews, giving presentations and leading discussions and debate.

This exam tests the necessary skills required to excel in education and in the workplace. The exam is carried out at the end of the course either online or in person.



Effective communication is key to success in the 21st century and developing these skills is an integral and crucial part of this course.

Leisure Programme

We know that learning happens most effectively when interactions are natural and authentic and when students are actively involved. Not only do they learn from their teachers and coaches they also learn from each other - and fast. The time our students spend on their sporting and leisure activities is just as valuable as the time spent on the more academic aspects of our courses.



SPORTS AND LEISURE

Every day after lessons, students participate in a choice of different sports and recreational activities. These sessions, which are organised and supervised by staff, enable students to continue practising their listening and speaking skills while doing something they enjoy.

Examples are:

Sports

- Athletics
- Badminton
- Basketball
- Football
- Kwik Cricket
- Rounders
- Squash
- Table Tennis
- Tennis
- Touch Rugby
- Volleyball

Recreational Activities

- Art
- Board Game Challenge
- Bracelet Making
- Cake Baking
- Chess
- Circuit Training
- Countryside Trek
- Dance Choreography
- Drama Workshop
- Karaoke
- Kite Flying
- Landscape Painting
- Lego Competition
- Make-up Workshop
- Messy Games
- Model Making
- Origami
- Quiz
- Party Decorations Making
- Swimming
- Table Football Tournament
- Tie-dye T-shirt Printing
- Train Set Building
- Ultimate Frisbee
- Yoga

BSS Experience – featuring True Me

Featured in every course, we provide an impressive programme of evening entertainment called BSS Experience that consists of fun and sociable challenges and events and is designed to deliver True Me.

SUNDAY BSS EXPERIENCE MISSION: INTEGRATION!	MONDAY BSS EXPERIENCE HOUSE WARMING!	TUESDAY BSS EXPERIENCE FEATURING TRUE ME
WEDNESDAY BSS EXPERIENCE FEATURING TRUE ME	THURSDAY BSS EXPERIENCE FEATURING TRUE ME	FRIDAY BSS EXPERIENCE LET'S CELEBRATE

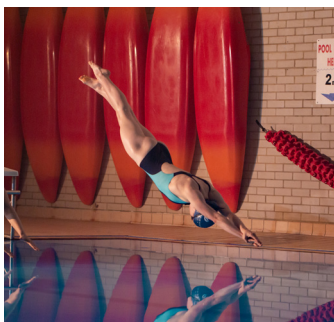
The BSS Experience featuring True Me gently and subtly encourages students to:

- Improve communication
- Improve self-confidence
- Enhance creativity
- Accept others
- Develop critical thinking skills
- Respect diversity
- Understand the importance of collaboration
- Celebrate difference
- Increase flexibility and adaptability
- Live authentically

True Me is an internal British Summer School philosophy and is reflected in everything we do.



Clayesmore School



Clayesmore School is a co-educational Senior Boarding and Day School that offers a homely, relaxed, and friendly environment for students. Its vast open spaces provide students with a real sense of fresh air and freedom.

LOCATION

Clayesmore School is located in the picturesque village of Iwerne Minster in the beautiful county of Dorset in the Southwest of England.

- Bournemouth: 37km
- Bristol: 82km
- Dorchester: 39km
- Heathrow: 166km
- London: 185km
- Southampton: 71km
- Weston-super-Mare: 82km

CAMPUS

This campus is shared with Exsportise Summer Schools and other non-residential groups.

ACCOMMODATION

Boys and girls sleep in suitable boarding accommodation on campus. Students share their bedroom with children of the same sex and of a similar age. Bathrooms are shared.

MEALS

The menu offers a mix of English and international food. Vegetarians and special diets for medical or religious needs are accommodated.

SPORTS & LEISURE FACILITIES

- Drama theatre
- Playing fields
- Sports hall
- Swimming pool
- Tennis courts

CLUBHOUSE

The Clubhouse is a social space where students can relax, socialise, and chat in an informal and comfortable setting.

WI-FI

Wi-Fi is available in some communal areas across the campus.

CENTRE OVERVIEW

- Southwest England
- Capacity 100
- 11-17 years
- 2-5 beds per room
- Max 5 beds per room
- No Smoking



Oundle School



Oundle School, a loyal partner of British Summer School for residential summer courses, is a co-educational Senior Boarding and Day School. Located in the heart of Oundle, students enjoy a sense of freedom and have easy access to shops, cafés, post office, banks and even a local farmers' market.



LOCATION

Oundle School is located in a charming market town called Oundle in the heart of Northamptonshire, a beautiful rural county in central England.

- Cambridge: 67km
- Heathrow: 160km
- London: 159km
- Peterborough: 23km
- Stansted: 106km



CAMPUS

This campus is shared with Exsportise Summer Schools and other residential and non-residential groups.



ACCOMMODATION

Boys and girls sleep in suitable boarding accommodation on campus. Students share their bedroom with children of the same sex and of a similar age. Bathrooms are shared.



MEALS

The menu offers a mix of English and international food. Vegetarians and special diets for medical or religious needs are accommodated.



SPORTS & LEISURE FACILITIES

- Astro turf pitch
- Athletics track
- Drama theatre
- Fitness centre
- Playing fields
- Netball courts
- Squash courts
- Sports hall
- Swimming pool (50m)
- Tennis courts



CLUBHOUSE

The Clubhouse is a social space where students can relax, socialise, and chat in an informal and comfortable setting.



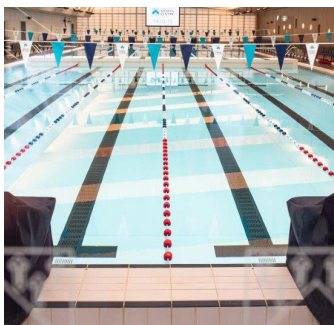
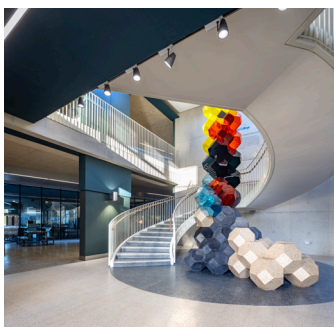
WI-FI

Wi-Fi is available in some communal areas across the campus.



OUNDLE VILLAGE

Students are allowed into Oundle village unsupervised in groups during afternoon free time. Different rules apply to different age groups. See Student Handbook for more details.



CENTRE OVERVIEW

- Central England
- Capacity 200
- 12-17 years
- 2-5 beds per room
- Max 5 beds per room
- No Smoking



TIMETABLE

A typical week

	SUNDAY	MONDAY	TUESDAY	WEDNESDAY	THURSDAY	FRIDAY	SATURDAY
07:30	New students	Wake Up	Wake Up	Wake Up	Wake Up	Wake Up	Departing students DEPARTURE DAY Departing students should depart in the morning and cannot attend the excursion.
08:00	ARRIVAL DAY	Breakfast	Breakfast	Breakfast	Breakfast	Breakfast	
08:45	Students can arrive at any time, but preferably in the afternoon.	Meeting	Meeting	Meeting	Meeting	Meeting	
09:00	Continuing students ALL DAY EXCURSION	Core English (1¼ hrs) What does true friendship mean? What attributes does an ideal friend have? How many true friends do you have?	Core English (1¼ hrs) In twos, make a list of the advantages and disadvantages of playing modern computer games.	Core English (1¼ hrs) What domestic and global social media channels do you use, how often and what for?	Core English (1¼ hrs) In twos, research some basic facts about BREXIT and present your findings to the class.	Core English (1¼ hrs) Revision Assessment True Me Reflection	Continuing students ALL DAY EXCURSION London Walking tour to see some of the famous sites such as 10 Downing Street, Big Ben, Buckingham Palace, Covent Garden, Houses of Parliament, Leicester Square, Oxford Street, Piccadilly Circus, Trafalgar Square. or Visit Southampton's landmark and historical building Titchfield Abbey. In the afternoon, have some free time to explore the city centre, go to a café or go shopping.
10:15	City / Seaside Town Visit	Break	Break	Break	Break	Break	
10:45	Visit a local city or seaside town to explore the town / city, visit any local attractions, have a walk along the promenade, go to a café or go shopping.	Learning & Innovation (1¼ hrs) Using your mobile phone, record a one-minute video to introduce yourself and show your classmate.	Learning & Innovation (1¼ hrs) Write a blog about your first day at British Summer School and post it online.	Learning & Innovation (1¼ hrs) Find a video clip on YouTube that summarizes how you feel about technology and explain the video and your feelings to the class.	Learning & Innovation (1¼ hrs) Program a micro bit to achieve a task of your choice such as controlling a music play list or creating a visual message for a classmate.	Learning & Innovation (1¼ hrs) Write an email to a family member or friend in English to tell them about achievements so far at British Summer School. Questionnaire	
12:00		Lunch	Lunch	Lunch	Lunch	Lunch	
13:00		Focus Communication (1½ hrs) Research the pros and cons of wind farms and defend your position in a rather heated filmed debate.	Focus Communication (1½ hrs) Write the first and last paragraph of the new biography of a famous person of your choice.	Focus Communication (1½ hrs) Devise a new company and introduce yourself as CEO of your company at a business networking event with drinks and snacks.	Focus Communication (1½ hrs) Working with a partner, prepare a PowerPoint presentation on "Bilingualism" and present it to the class.	Focus Communication (1½ hrs) Write a short journalistic article piece with the title "If only the World had acted sooner..."	
14:30		Break	Break	Break	Break	Break	
15:00		Sports & Leisure <i>Choose between:</i> Football Volleyball Fitness Session Model Making Pro Options (Oundle) (1½hrs)	Sports & Leisure <i>Choose between:</i> Basketball Athletics Tennis Salsa Lesson Pro Options (Oundle) (1½hrs)	Sports & Leisure <i>Choose between:</i> Football Rounders Messy Games Landscape Painting	Sports & Leisure <i>Choose between:</i> Kwik Cricket Tennis Swimming Tie-die t-shirt Pro Options (Oundle) (1½hrs)	Sports & Leisure <i>Choose between:</i> Football Basketball Circuits Challenge Yoga Pro Options (Oundle) (1½hrs)	
16:30		Free Time	Free Time	Free Time	Free Time	Free Time	
18:00	Dinner	Dinner	Dinner	Dinner	Dinner	Dinner	Dinner
19:00	BSS Experience Mission: Integration! featuring True Me	BSS Experience Housewarming! featuring True Me	BSS Experience Challenges & Events featuring True Me	BSS Experience Challenges & Events featuring True Me	BSS Experience Challenges & Events featuring True Me	BSS Experience Let's Celebrate! featuring True Me	Chill and Chat
20:30	Free Time	Free Time	Free Time	Free Time	Free Time	Free Time	
21:00	House Meeting	House Meeting	House Meeting	House Meeting	House Meeting	House Meeting	House Meeting
22:15	Lights Out (11-14yrs)	Lights Out (11-14yrs)	Lights Out (11-14yrs)	Lights Out (11-14yrs)	Lights Out (11-14yrs)	Lights Out (11-14yrs)	Lights Out (11-14yrs)
23:00	Lights Out (15-17yrs)	Lights Out (15-17yrs)	Lights Out (15-17yrs)	Lights Out (15-17yrs)	Lights Out (15-17yrs)	Lights Out (15-17yrs)	Lights Out (15-17yrs)

For illustrative purposes only; actual activities and timings may be different.



For all enquiries and to apply, please contact British Summer School:

+44 (0)1444 444744

admin@britishsummerschool.co.uk

www.britishsummerschool.co.uk



**British
Summer
School**